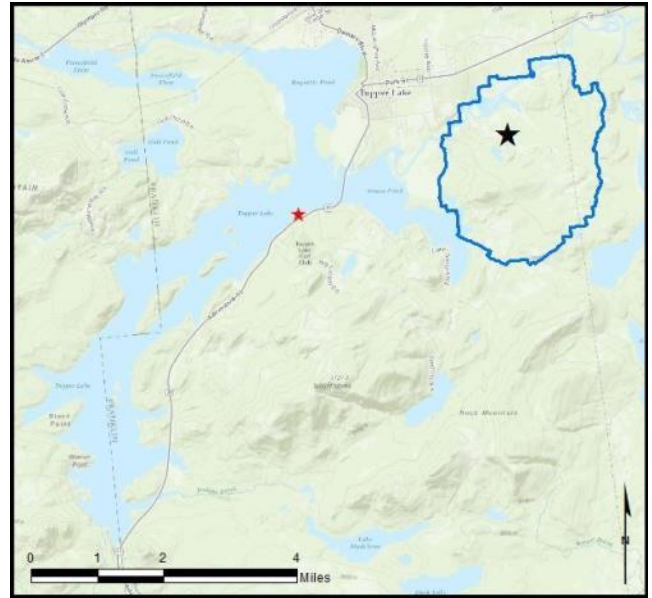


Tupper Lake

AIS intercepted: 1
Boats inspected: 1,511
Number of visitors: 2,795
Boats failing inspection: 0.2%

Dates of operation: May 26 – October 9
Total number of days covered: 136
Weekly coverage: 7 days
Visitors showing spread prevention awareness: 39%
Number of previously visited waterways: 19

AIS present in waterbody: variable-leaf milfoil
Stewardship history: 2009 - present



Watercraft	Boat Type										total # boats observed	total # boats inspected
	Barge	Canoe	Dock	Kayak	Motor	PWC	Row	Sail	SUP	Wind		
# boats observed	1	35	2	57	1349	86	0	2	1	0	1533	1511
percentage of total boats	0.1%	2%	0.1%	4%	88%	6%	0%	0.1%	0.1%	0%	100%	99%

Boats observed at launch, including those not inspected. PWC=personal watercraft, SUP=stand-up paddleboard, Wind=windsurfer.

total # visitors	organisms found			total organisms	# boats dirty	# boats w/AIS	# of inspections	% of inspected boats dirty	% of inspected boats w/AIS
	entering	leaving	roadside						
2795	1	2	0	3	3	1	1511	0.2%	0.1%

Boats dirty = watercraft with any organic material, invasive, non-invasive or unknown.

Visitor Responses	AIS spread prevention awareness											# groups asked
	yes	Inspect	Wash	Drain	Bait	LW	Dry	Decon	same lake	first/frozen	didn't ask	
# groups	550	20	48	16	7	6	20	18	414	121	56	1407
percentage of total groups asked	39%	1%	3%	1%	0.5%	0.4%	1%	1%	29%	9%	NA	

Yes = showed AIS spread prevention awareness; Drain = drained bilge; Bait = emptied bait bucket/disposed of bait; LW = drained livewell; Dry = dried boat; Decon = visited decon station; Same Lake = boat only goes in this lake; First/Frozen = first launch of the season or frozen boat.

Organisms Removed	Organism Type									total # AIS	% of inspected boats w/AIS
	Non-invasive	BN*	CLP*	HYD*	EWM*	VLM*	SWF*	WC*	ZM*		
# organisms	2	0	0	0	0	1	0	0	0	1	0.1%
percentage of total orgs	67%	0%	0%	0%	0%	33%	0%	0%	0%		

Non-invasive = native aquatic or terrestrial material; BN = brittle naiad; CLP = curly-leaf pondweed; HYD = hydrilla; EWM = Eurasian watermilfoil; VLM = variable-leaf milfoil; SWF = spiny/fishhook waterflea; WC = water chestnut; ZM = zebra mussel; */AIS = aquatic invasive species.

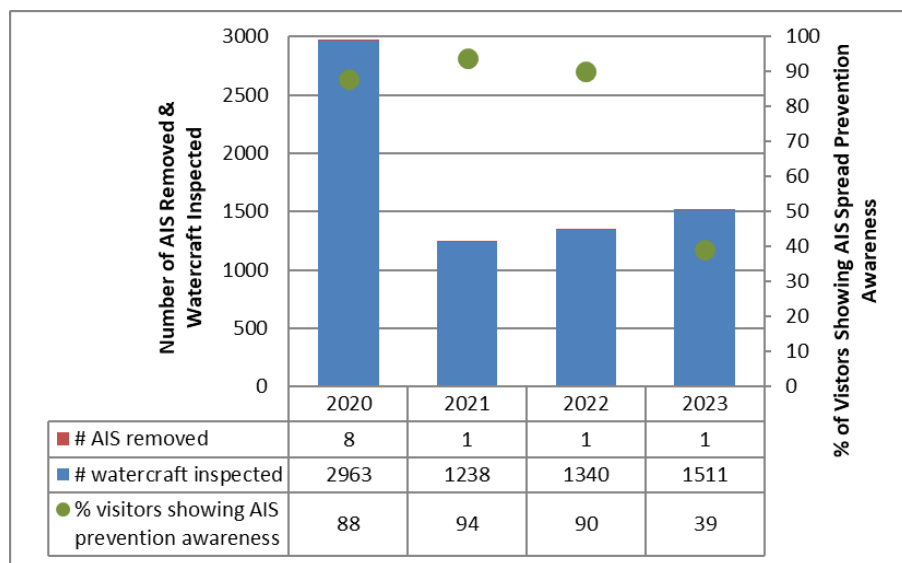
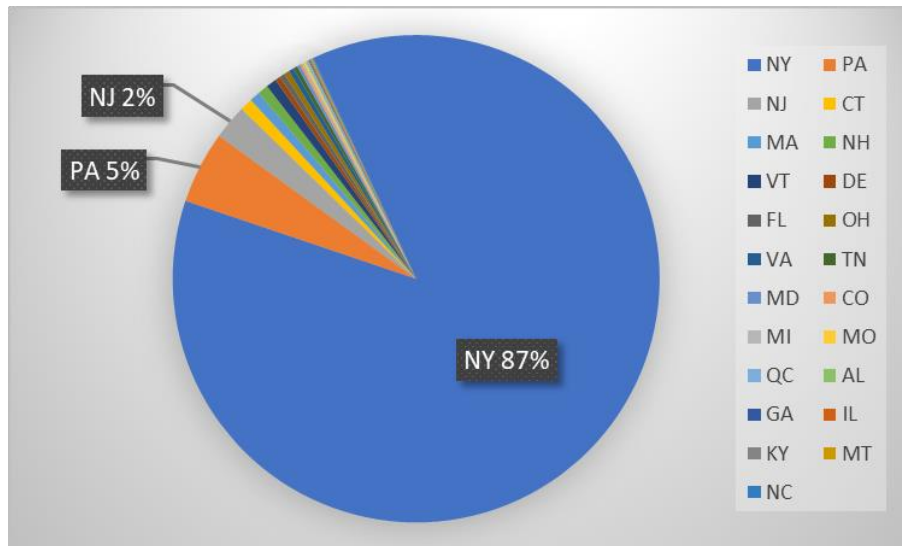
Aquatic Invasive Species Intercepted by Stewards	# found on boats launching	Previous Waterway	# found on boats retrieving	Previous Waterway
variable-leaf milfoil	0	N/A	1	Tupper Lake (1)
Totals	0		1	

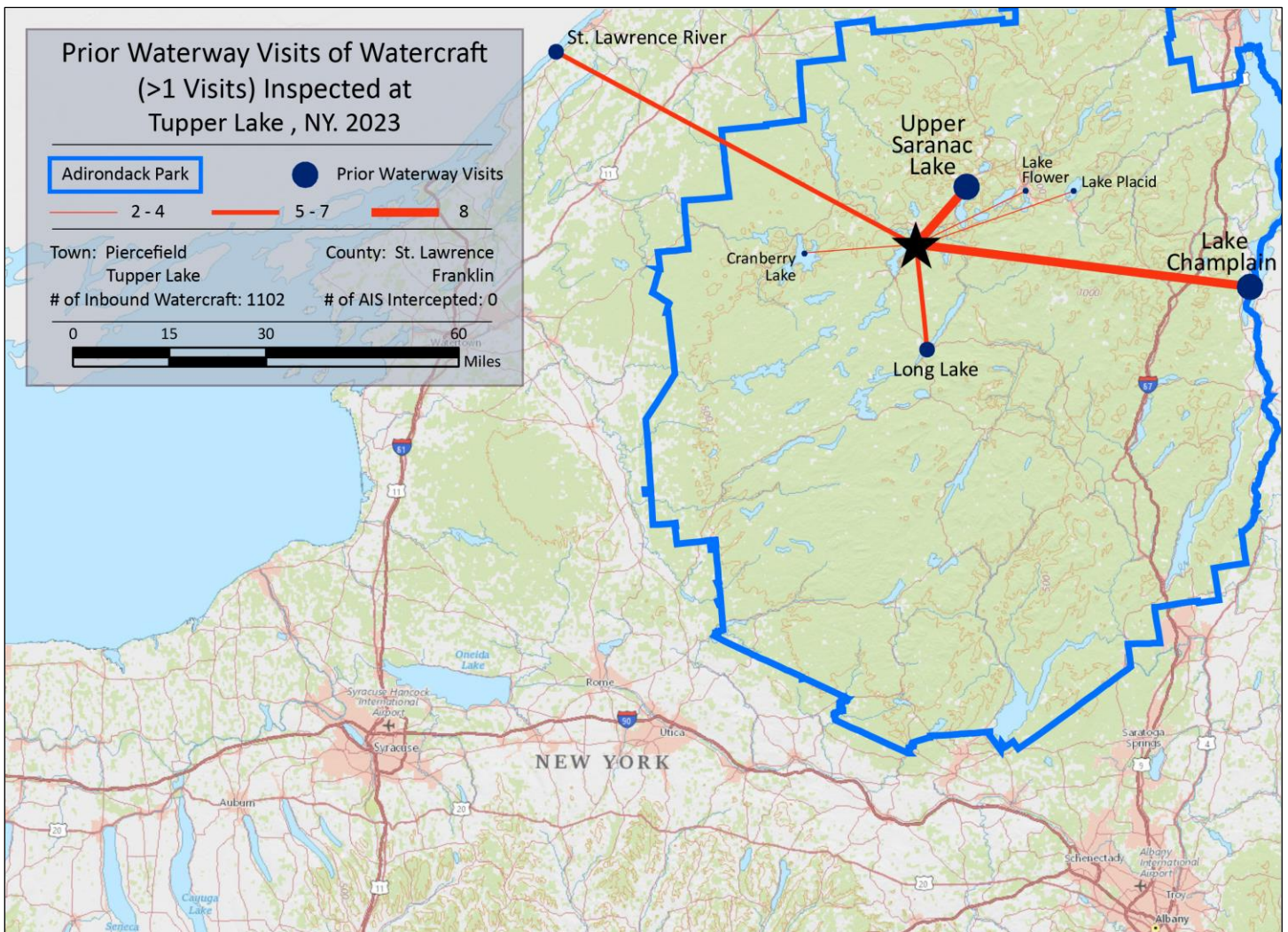
Previous Waterways for Launching Boats	# visits
SAME LAKE - PREVIOUS VISIT	591
NONE	429
NOT ASKED	28
Lake Champlain	8
Upper Saranac Lake	8
Long Lake	7
St. Lawrence River	5
Cranberry Lake	4
Lake Flower	3

Previous Waterways for Launching Boats	# visits
Lake Placid	2
RENTAL	2
Saranac Chain of Lakes (unspecified)	2
Big Moose Lake	1
Buck Pond (Rainbow Lake/Lake Kushaqua)	1
Carry Falls Reservoir	1
Hudson River	1
Lake Durant (Hamilton County)	1

Previous Waterways for Launching Boats	# visits
Lake George	1
Long Pond St. Regis Canoe Area (Franklin Cou)	1
Lower Saranac Lake	1
North Sandy Pond (Jefferson County)	1
Oneida Lake	1
REFUSED TO ANSWER	1
Second Pond	1
Star Lake (St Lawrence County)	1
Total	1102

State of Motorized Boat Registration
(n=1,184)





Tupper Lake Boat Launch