

AWI Partner Program Reports

Schroon Region – Schroon Lake

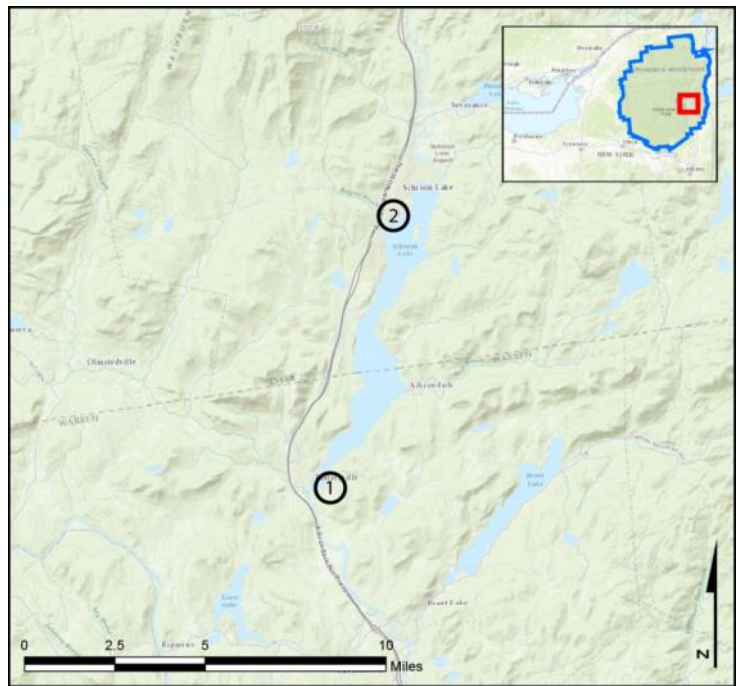
AIS intercepted: 4
Boats inspected: 5,769
Number of visitors: 12,007
Boats failing inspection: 0.2%
Decontaminations performed: 129

Dates of operation: May 22 – October 9
Weekly coverage: 7 days
Visitors showing spread prevention awareness: 99%
Number of previously visited waterways: 48

AIS present in waterbody: curly-leaf pondweed,
Eurasian watermilfoil

Partnerships: East Shore Schroon Lake Association,
Schroon Lake Association, Town of Horicon

Notes: AWI provided support through WISPA data management.



1-Horicon Launch/Decon; 2-Town of Schroon Launch

Watercraft	Boat Type										total # boats observed	total # boats inspected
	Barge	Canoe	Dock	Kayak	Motor	PWC	Row	Sail	SUP	Wind		
Horicon Decon	0	0	0	1	108	18	1	2	0	0	130	130
percentage of total boats	0%	0%	0%	1%	83%	14%	1%	2%	0%	0%	100%	100%
Horicon Launch	0	12	11	165	3516	300	12	7	1	2	4026	4025
percentage of total boats	0%	0.3%	0.3%	4%	87%	7%	0.3%	0.2%	0.02%	0.05%	100%	99.98%
Town of Schroon Launch	0	33	1	216	1082	250	7	16	18	1	1624	1614
percentage of total boats	0%	2%	0.1%	13%	67%	15%	0.4%	1%	1%	0.1%	100%	99%
total	0	45	12	382	4706	568	20	25	19	3	5780	5769
percentage of total boats	0%	1%	0.2%	7%	81%	10%	0.3%	0.4%	0.3%	0.1%	100%	99.8%

Boats observed at launch, including those not inspected. PWC=personal watercraft, SUP=stand-up paddleboard, Wind=windsurfer.

	total # visitors	organisms found			total organisms	# boats dirty	# boats w/AIS	# of inspections	% of inspected boats dirty	% of inspected boats w/AIS
		entering	leaving	roadside						
Horicon Decon	242	1	0	0	1	1	1	130	0.8%	0.8%
Horicon Launch	8578	0	0	0	0	0	0	4025	0%	0%
Town of Schroon Launch	3187	4	7	0	11	9	3	1614	0.6%	0.2%
total	12007	5	7	0	12	10	4	5769	0.2%	0.1%

Boats dirty = watercraft with any organic material, invasive, non-invasive or unknown.

Visitor Responses	AIS spread prevention awareness											# groups asked
	yes	Inspect	Wash	Drain	Bait	LW	Dry	Decon	same lake	first/frozen	didn't ask	
Horicon Decon	129	69	8	5	1	2	22	129	0	0	1	129
percentage of total groups asked	100%	53%	6%	4%	1%	2%	17%	100%	0%	0%	NA	
Horicon Launch	3056	2431	118	12	0	2	251	59	178	201	891	3080
percentage of total groups asked	99%	79%	4%	0.4%	0%	0.1%	8%	2%	6%	7%	NA	
Town of Schroon Launch	1207	194	514	13	6	7	34	23	482	25	255	1221
percentage of total groups asked	99%	16%	42%	1%	0.5%	1%	3%	2%	39%	2%	NA	
total	4392	2694	640	30	7	11	307	211	660	226	1147	4430
percentage of total groups asked	99%	61%	14%	1%	0.2%	0.2%	7%	5%	15%	5%	NA	

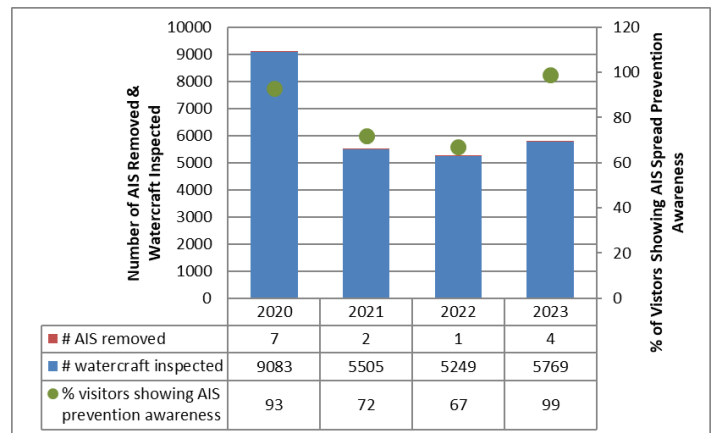
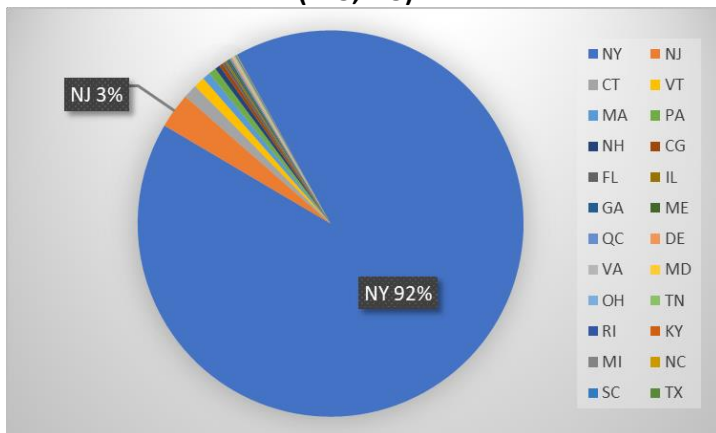
Yes = showed AIS spread prevention awareness; Drain = drained bilge; Bait = emptied bait bucket/disposed of bait; LW = drained livewell; Dry = dried boat; Decon = visited decon station; Same Lake = boat only goes in this lake; First/Frozen = first launch of the season or frozen boat.

Organisms Removed	Organism Type										total # AIS	% of inspected boats w/AIS
	Non-invasive	BN*	CLP*	HYD*	EWM*	VLM*	SWF*	WC*	ZM*			
Horicon Decon	0	0	0	0	0	0	0	0	1	1	0.8%	
percentage of total orgs	0%	0%	0%	0%	0%	0%	0%	0%	100%			
Horicon Launch	0	0	0	0	0	0	0	0	0	0	0%	
percentage of total orgs	0%	0%	0%	0%	0%	0%	0%	0%	0%			
Town of Schroon Launch	8	0	0	0	3	0	0	0	0	3	0.2%	
percentage of total orgs	73%	0%	0%	0%	27%	0%	0%	0%	0%			
total	8	0	0	0	3	0	0	0	1	4	0.1%	
percentage of total orgs	67%	0%	0%	0%	25%	0%	0%	0%	8%			

Non-invasive = native aquatic or terrestrial material; BN = brittle naiad; CLP = curly-leaf pondweed; HYD = hydrilla; EWM = Eurasian watermilfoil; VLM = variable-leaf milfoil; SWF = spiny/fishhook waterflea; WC= water chestnut; ZM = zebra mussel; */AIS = aquatic invasive species.

Aquatic Invasive Species Intercepted by Stewards	# found on boats launching	Previous Waterway	# found on boats retrieving	Previous Waterway
Eurasian watermilfoil	2	Schroon Lake (1), Unknown (1)	1	Schroon Lake (1)
zebra mussel	1	Saratoga Lake (1)	0	N/A
Totals	3		1	

State of Motorized Boat Registration
(n=5,715)



Previous Waterways for Launching Boats	# visits
SAME LAKE - PREVIOUS VISIT	2744
NONE	925
Lake George	71
Brant Lake	50
Lake Champlain	21
Great Sacandaga Lake	15
Saratoga Lake	10
Hudson River	9
Loon Lake (Warren County)	8
Paradox Lake	7
UNKNOWN (boater doesn't know)	7
Glen Lake (Warren County)	6
NOT ASKED	6
Cossayuna Lake (Washington County)	5
Mohawk River	4
Otsego Lake	4
REFUSED TO ANSWER	4
Schoharie Creek, NY	3
Canadarago Lake	2

Previous Waterways for Launching Boats	# visits
Greenwood Lake (Orange County)	2
Indian Lake (Hamilton County)	2
La Chute River, NY	2
Lake Bomoseen, Castleton, VT	2
Lake Luzerne (Warren County)	2
Lake Pleasant	2
RENTAL	2
Saranac Chain of Lakes (unspecified)	2
St. Lawrence River	2
Tupper Lake	2
Allegheny Reservoir, PA	1
Canachagala Lake (Herkimer County)	1
Canada Lake	1
Canandaigua Lake	1
Chateaugay Lake	1
Conesus Lake	1
Harriman Reservoir, Wilmington, VT	1
Hinckley Reservoir	1
Lake Durant (Hamilton County)	1

Previous Waterways for Launching Boats	# visits
Lake Monomonic, NH	1
Lake Ontario	1
Lake Placid	1
Lake Raponda, Wilmington, VT	1
Little Tupper Lake	1
Long Island Sound	1
Long Lake	1
Lower Saranac Lake	1
Navesink River, NJ	1
Oneida Lake	1
Ossipee Lake, Freedom, NH	1
Otis Reservoir, Otis, MA	1
Seventh Lake	1
Spruce Run Reservoir, Hunterdon County, NJ	1
Sweet Arrow Lake, PA	1
Trout Lake (Warren County)	1
UnspecifiedPrivateOwned	1
Upper Saranac Lake	1
Total	3948

