

## AWI Partner Program Reports

### Schroon Region – Schroon Lake

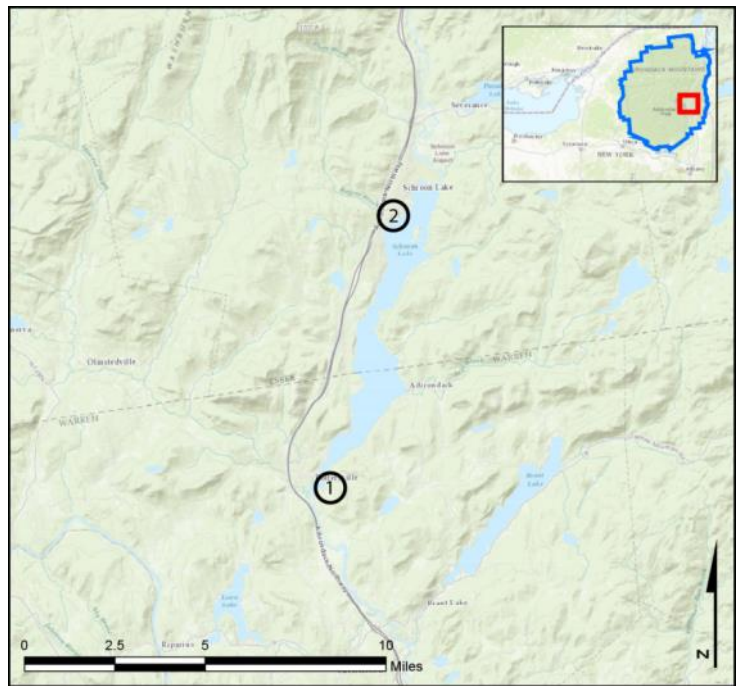
**AIS intercepted:** 1  
**Boats inspected:** 5,249  
**Number of visitors:** 10,489  
**Boats failing inspection:** 0.2%  
**Decontaminations performed:** 72

**Dates of operation:** 21 May – 10 October  
**Weekly coverage:** 7 days  
**Visitors showing spread prevention awareness:** 67%  
**Number of previously visited waterways:** 54

**AIS present in waterbody:** curly-leaf pondweed,  
Eurasian watermilfoil

**Partnerships:** East Shore Schroon Lake Association,  
Schroon Lake Association, Town of Horicon

**Notes:** AWI provided support through WISPA data management.



1-Horicon Launch/Decon; 2-Town of Schroon Launch

Watercraft	Boat Type										total # boats observed	total # boats inspected
	Barge	Canoe	Dock	Kayak	Motor	PWC	Row	Sail	SUP	Wind		
Horicon Decon	0	0	0	1	74	11	0	0	0	0	86	86
percentage of total boats	0%	0%	0%	1%	86%	13%	0%	0%	0%	0%	100%	100%
Horicon Launch	0	9	1	36	2755	149	0	13	1	4	2968	2964
percentage of total boats	0%	0%	0%	1%	93%	5%	0%	0%	0%	0%	100%	99.9%
Town of Schroon Launch	1	43	6	304	1530	319	4	12	25	4	2248	2199
percentage of total boats	0%	2%	0%	14%	68%	14%	0%	1%	1%	0%	100%	98%
<b>total</b>	<b>1</b>	<b>52</b>	<b>7</b>	<b>341</b>	<b>4359</b>	<b>479</b>	<b>4</b>	<b>25</b>	<b>26</b>	<b>8</b>	<b>5302</b>	<b>5249</b>
percentage of total boats	<b>0%</b>	<b>1%</b>	<b>0%</b>	<b>6%</b>	<b>82%</b>	<b>9%</b>	<b>0%</b>	<b>0%</b>	<b>0%</b>	<b>0%</b>	<b>100%</b>	<b>99%</b>

Boats observed at launch, including those not inspected. PWC=personal watercraft, SUP=stand-up paddleboard, Wind=windsurfer.

	total # visitors	organisms found			total organisms	# boats dirty	# boats w/AIS	# of inspections	% of inspected boats dirty	% of inspected boats w/AIS
		entering	leaving	roadside						
Horicon Decon	181	0	0	--	0	0	0	86	0%	0%
Horicon Launch	5886	0	0	--	0	0	0	2964	0%	0%
Town of Schroon Launch	4422	4	3	--	7	8	1	2199	0.4%	0.05%
<b>total</b>	<b>10489</b>	<b>4</b>	<b>3</b>	<b>--</b>	<b>7</b>	<b>8</b>	<b>1</b>	<b>5249</b>	<b>0.2%</b>	<b>0.02%</b>

Boats dirty = watercraft with any organic material, invasive, non-invasive or unknown.

Visitor Responses	AIS spread prevention awareness											# groups asked
	yes	Inspect	Wash	Drain	Bait	LW	Dry	Decon	same lake	first/frozen	didn't ask	
Horicon Decon	85	44	7	11	0	2	32	73	0	0	1	85
percentage of total groups asked	100%	52%	8%	13%	0%	2%	38%	86%	0%	0%	NA	
Horicon Launch	1521	1120	87	22	3	3	131	38	84	122	1357	1590
percentage of total groups asked	96%	70%	5%	1%	0%	0%	8%	2%	5%	8%	NA	
Town of Schroon Launch	618	28	199	48	0	3	57	57	236	113	434	1633
percentage of total groups asked	38%	2%	12%	3%	0%	0%	3%	3%	14%	7%	NA	
<b>total</b>	<b>2224</b>	<b>1192</b>	<b>293</b>	<b>81</b>	<b>3</b>	<b>8</b>	<b>220</b>	<b>168</b>	<b>320</b>	<b>235</b>	<b>1792</b>	<b>3308</b>
percentage of total groups asked	<b>67%</b>	<b>36%</b>	<b>9%</b>	<b>2%</b>	<b>0%</b>	<b>0%</b>	<b>7%</b>	<b>5%</b>	<b>10%</b>	<b>7%</b>	<b>NA</b>	

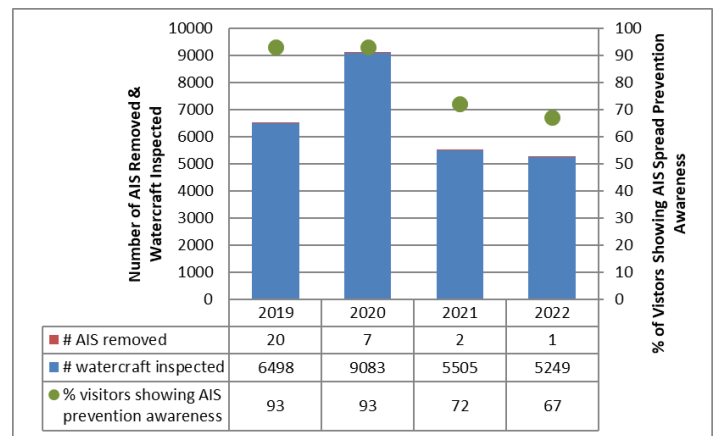
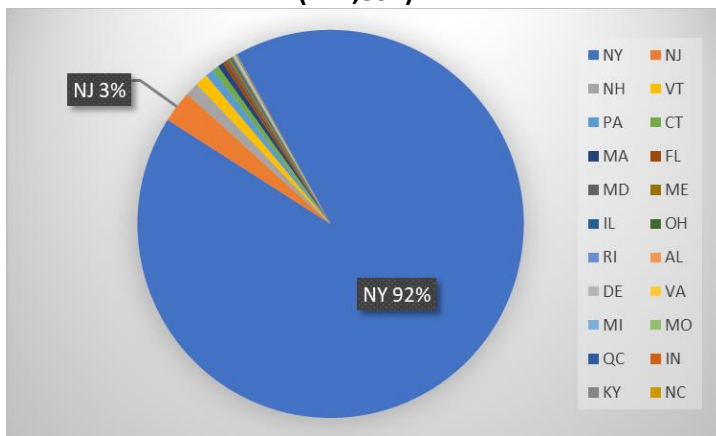
Yes = showed AIS spread prevention awareness; Drain = drained bilge; Bait = emptied bait bucket/disposed of bait; LW = drained livewell; Dry = dried boat; Decon = visited decon station; Same Lake = boat only goes in this lake; First/Frozen = first launch of the season or frozen boat.

Organisms Removed	Organism Type							total # AIS	% of inspected boats w/AIS
	Non-invasive	CLP*	EWM*	VLM*	SWF*	WC*	ZM*		
Horicon Decon	0	0	0	0	0	0	0	0	0%
percentage of total orgs	0%	0%	0%	0%	0%	0%	0%		
Horicon Launch	0	0	0	0	0	0	0	0	0%
percentage of total orgs	0%	0%	0%	0%	0%	0%	0%		
Town of Schroon Launch	6	0	1	0	0	0	0	1	0.05%
percentage of total orgs	86%	0%	14%	0%	0%	0%	0%		
<b>total</b>	<b>6</b>	<b>0</b>	<b>1</b>	<b>0</b>	<b>0</b>	<b>0</b>	<b>0</b>	<b>1</b>	<b>0.02%</b>
percentage of total orgs	<b>86%</b>	<b>0%</b>	<b>14%</b>	<b>0%</b>	<b>0%</b>	<b>0%</b>	<b>0%</b>		

Non-invasive = native aquatic or terrestrial material; CLP = curly-leaf pondweed; EWM = Eurasian watermilfoil; VLM = variable-leaf milfoil; SWF = spiny waterflea; WC= water chestnut; ZM = zebra mussel; \*/AIS = aquatic invasive species.

Aquatic Invasive Species Intercepted by Stewards	# found on boats launching	Previous Waterway	# found on boats retrieving	Previous Waterway
Eurasian watermilfoil	1	Lake Bomoseen VT (1)	0	N/A
<b>Totals</b>	<b>1</b>		<b>0</b>	

State of Motorized Boat Registration  
(n=4,834)



Previous Waterways for Launching Boats	# visits
SAME LAKE - PREVIOUS VISIT	2505
NONE	1105
Lake George	50
NOT ASKED	35
Saratoga Lake	30
Paradox Lake	26
Brant Lake	20
Adirondacks (unspecified)	15
UNKNOWN (boater doesn't know)	14
Lake Champlain	12
Hudson River	10
Great Sacandaga Lake	9
Loon Lake (Warren County)	9
Unspecified Private Owned	5
Lake Placid	4
Glen Lake (Warren County)	3
Indian Lake (Hamilton County)	3
RENTAL	3
Round Lake (Saratoga County)	3
Thompsons Lake (Albany County)	3
Atlantic Ocean	2

Previous Waterways for Launching Boats	# visits
Lake Ontario	2
Otsego Lake	2
Raquette Lake	2
Round Lake (Hamilton County)	2
Sacandaga Lake	2
Stillwater Reservoir	2
Tomkins Lake (Rockland County)	2
Tupper Lake	2
Upper Saranac Lake	2
Browns Tract Pond	1
Burden Lake (Rensselaer County)	1
Canadarago Lake	1
Chateaugay Lake	1
Chemong Lake, Peterborough County, ON	1
Cossayuna Lake (Washington County)	1
Crooked Lake (Rensselaer County)	1
Delaware River	1
Eagle Lake (Essex County)	1
Finger Lakes (unspecified)	1
Fourth Lake	1
Greenwood Lake (Orange County)	1

Previous Waterways for Launching Boats	# visits
Harriman Reservoir, Wilmington, VT	1
Harris Lake (Essex County)	1
Lake Bomoseen, Castleton, VT	1
Lake Erie	1
Lake Saint Catherine, Poultney, VT	1
Lake Sunapee, Sunapee, NH	1
Long Lake	1
Long Pond St. Regis Canoe Area (Franklin)	1
Middle Saranac Lake	1
Mohawk River	1
Moreau Lake (Saratoga County)	1
Niagara River, NY	1
Old Forge Pond (Hamilton County)	1
Oneida Lake	1
Otis Reservoir, Otis, MA	1
Putnam Pond (Essex County)	1
Rock Lake (Hamilton County)	1
Saranac Chain of Lakes (unspecified)	1
Schroon River, NY	1
St. Lawrence River	1
Warner Lake (Albany County)	1
<b>Total</b>	<b>3917</b>

