

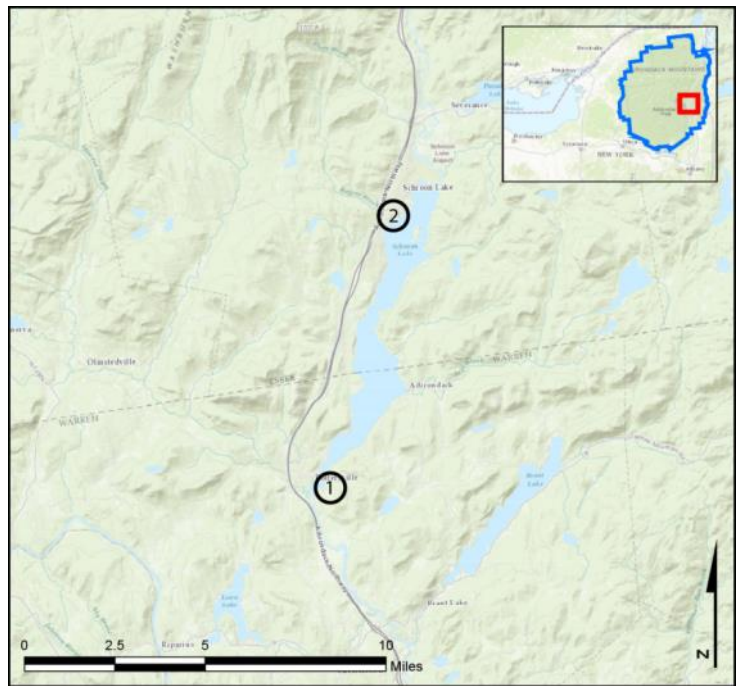
AWI Partner Program Reports

Schroon Region – Schroon Lake

AIS intercepted: 2
Boats inspected: 5,505
Number of visitors: 11,455
Boats failing inspection: 0.1%

Dates of operation: 21 May – 11 October
Weekly coverage: 7 days
Visitors showing spread prevention awareness: 72%
Number of previously visited waterways: 43

AIS present in waterbody: curly-leaf pondweed,
 Eurasian watermilfoil
Partnerships: East Shore Schroon Lake Association,
 Schroon Lake Association, Town of Horicon



1-Horicon Launch/Decon; 2-Town of Schroon Launch

Watercraft	Boat Type										total # boats observed	total # boats inspected
	Barge	Canoe	Dock	Kayak	Motor	PWC	Row	Sail	SUP	Wind		
Horicon Decon	0	0	0	0	150	18	0	0	0	0	168	168
percentage of total boats	0%	0%	0%	0%	89%	11%	0%	0%	0%	0%	100%	100%
Horicon Launch	2	15	2	26	3185	198	2	9	1	2	3442	3442
percentage of total boats	0.1%	0.4%	0.1%	1%	93%	6%	0.1%	0.3%	0.03%	0.1%	100%	100%
Town of Schroon Launch	2	30	16	199	1424	202	3	12	24	0	1912	1895
percentage of total boats	0.1%	2%	1%	10%	74%	11%	0.2%	1%	1%	0%	100%	99%
total	4	45	18	225	4759	418	5	21	25	2	5522	5505
percentage of total boats	0.1%	1%	0.3%	4%	86%	8%	0.1%	0.4%	0.5%	0.04%	100%	100%

Boats observed at launch, including those not inspected. PWC=personal watercraft, SUP=stand-up paddleboard, Wind=windsurfer.

	total # visitors	organisms found			total organisms	# boats dirty	# boats w/AIS	# of inspections	% of inspected boats dirty	% of inspected boats w/AIS
		entering	leaving	roadside						
Horicon Decon	343	3	0	--	3	2	2	168	1.2%	1.2%
Horicon Launch	7157	0	0	--	0	0	0	3442	0.0%	0%
Town of Schroon Launch	3955	3	2	--	5	5	0	1895	0.3%	0%
total	11455	6	2	0	8	7	2	5505	0.1%	0.04%

Boats dirty = watercraft with any organic material, invasive, non-invasive or unknown.

Visitor Responses	AIS spread prevention awareness											# groups asked
	yes	Inspect	Wash	Drain	Bait	LW	Dry	Decon	same lake	first/frozen	didn't ask	
Horicon Decon	168	102	2	40	1	6	70	159	1	1	0	168
percentage of total groups asked	100%	61%	1%	24%	1%	4%	42%	95%	1%	1%	NA	
Horicon Launch	1424	1116	69	48	1	4	72	50	108	78	2010	1430
percentage of total groups asked	100%	78%	5%	3%	0.1%	0.3%	5%	3%	8%	5%	NA	
Town of Schroon Launch	696	17	57	10	2	9	14	54	473	147	224	1567
percentage of total groups asked	44%	1%	4%	1%	0.1%	1%	1%	3%	30%	9%	NA	
total	2288	1235	128	98	4	19	156	263	582	226	2234	3165
percentage of total groups asked	72%	39%	4%	3%	0.1%	1%	5%	8%	18%	7%	NA	

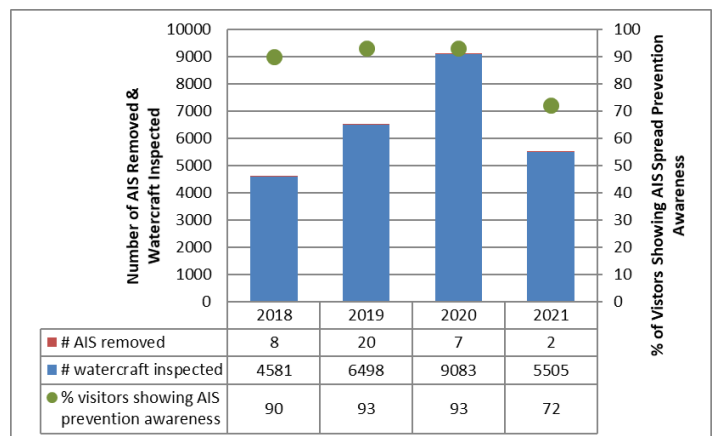
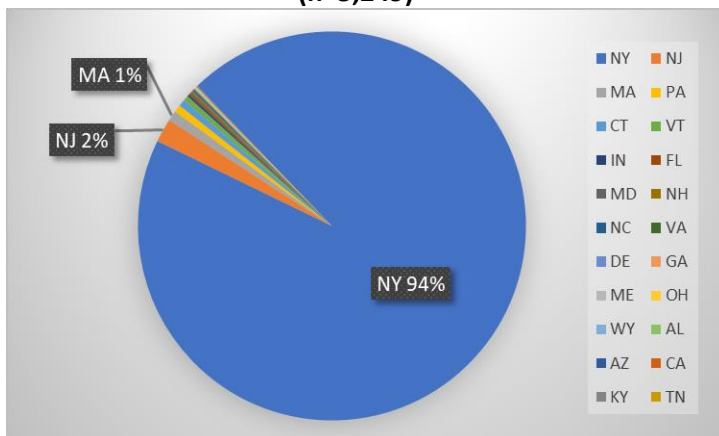
Yes = showed AIS spread prevention awareness; Drain = drained bilge; Bait = emptied bait bucket/disposed of bait; LW = drained livewell; Dry = dried boat; Decon = visited decon station; Same Lake = boat only goes in this lake; First/Frozen = first launch of the season or frozen boat.

Organisms Removed	Organism Type										total # AIS	% of inspected boats w/AIS
	Non-invasive	CLP*	HYD*	EWM*	VLM*	QUA*	SWF*	WC*	ZM*			
Horicon Decon	1	0	0	2	0	0	0	0	0	0	2	1.2%
percentage of total orgs	33%	0%	0%	67%	0%	0%	0%	0%	0%	0%		
Horicon Launch	0	0	0	0	0	0	0	0	0	0	0	0%
percentage of total orgs	0%	0%	0%	0%	0%	0%	0%	0%	0%	0%		
Town of Schroon Launch	5	0	0	0	0	0	0	0	0	0	0	0%
percentage of total orgs	100%	0%	0%	0%	0%	0%	0%	0%	0%	0%		
total	6	0	0	2	0	0	0	0	0	0	2	0.04%
percentage of total orgs	75%	0%	0%	25%	0%	0%	0%	0%	0%	0%		

Non-invasive = native aquatic or terrestrial material; CLP = curly-leaf pondweed; HYD = hydrilla; EWM = Eurasian watermilfoil; VLM = variable-leaf milfoil; QUA = quagga mussel; SWF = spiny waterflea; WC= water chestnut; ZM = zebra mussel; */AIS = aquatic invasive species.

Aquatic Invasive Species Intercepted by Stewards	# found on boats launching	Previous Waterway	# found on boats retrieving	Previous Waterway
Eurasian watermilfoil	1	Lake George (1)	1	Schroon Lake (1)
Totals	1		1	

State of Motorized Boat Registration
(n=5,249)



Previous Waterways for Launching Boats	# visits
SAME LAKE - PREVIOUS VISIT	2582
NONE	1039
Lake George	76
NOT ASKED	41
Hudson River	40
Saratoga Lake	31
Brant Lake	30
Lake Champlain	27
Great Sacandaga Lake	11
Paradox Lake	11
UNKNOWN (boater doesn't know)	11
Loon Lake (Warren County)	7
St. Lawrence River	4
Ballston Lake	3
Greenwood Lake, West Milford, NJ	3
Indian Lake (Hamilton County)	3
RENTAL	3

Previous Waterways for Launching Boats	# visits
Atlantic Ocean	2
Cayuga Lake	2
Lake Adirondack (Hamilton County)	2
Lake Luzerne (Warren County)	2
Long Lake	2
Mirror Lake	2
Moreau Lake (Saratoga County)	2
REFUSED TO ANSWER	2
Almond Lake (Steuben County)	1
Batten Kill River	1
Blue Mountain Lake	1
Buck Pond (Rainbow Lake/Lake Kushaqua)	1
Canada Lake	1
Cassadaga Lakes (Chautauqua County)	1
Chautauqua Lake (Chautauqua County)	1
Clinton Reservoir, West Milford, NJ	1
Cohocton River	1

Previous Waterways for Launching Boats	# visits
Cossayuna Lake (Washington County)	1
Eagle Lake (Essex County)	1
Eagle Lake (Hamilton County)	1
Fern Lake (Clinton County)	1
Fourth Lake	1
Grass Lake (Jefferson/St Lawrence Counties)	1
Harris Lake (Essex County)	1
Harvey's Lake, Harveys Lake, PA	1
Lake Algonquin (Hamilton County)	1
Lake Lackawanna, Byram Township, NJ	1
Mastens Lake (Sullivan County)	1
Middle Saranac Lake	1
Oneida Lake	1
Round Lake (Saratoga County)	1
Singletary Pond, Millbury, MA	1
unspecified lake in Quebec	1
unspecified pond in Vermont	1
Total	3964

