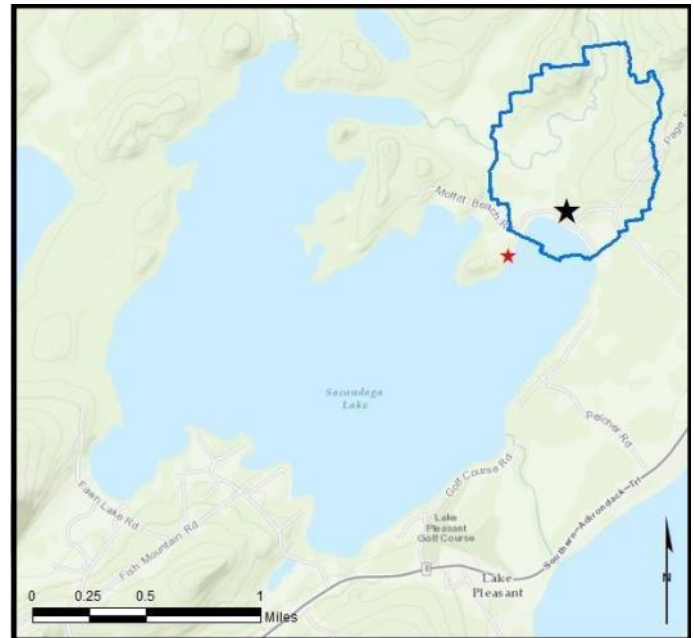


Sacandaga Lake (Moffitt Beach)

AIS intercepted: 11
Boats inspected: 1,764
Number of visitors: 4,096
Boats failing inspection: 14.5%

Dates of operation: May 29 – October 11
Total number of days covered: 122
Weekly coverage: 7 days
Visitors showing spread prevention awareness: 81%
Number of previously visited waterways: 59

AIS present in waterbody: spiny waterflea
Stewardship history: 2015 - present
Partnership: Lake Pleasant Shoreowners Association,
 Town of Lake Pleasant



| Watercraft | Boat Type | | | | | | | | | | total # boats observed | total # boats inspected |
|---------------------------|-----------|-------|------|-------|-------|-----|-----|------|------|------|------------------------|-------------------------|
| | Barge | Canoe | Dock | Kayak | Motor | PWC | Row | Sail | SUP | Wind | | |
| # boats observed | 5 | 50 | 1 | 160 | 1312 | 226 | 10 | 8 | 3 | 2 | 1777 | 1764 |
| percentage of total boats | 0.3% | 3% | 0.1% | 9% | 74% | 13% | 1% | 0.5% | 0.2% | 0.1% | 100% | 99% |

Boats observed at launch, including those not inspected. PWC=personal watercraft, SUP=stand-up paddleboard, Wind=windsurfer.

| total # visitors | organisms found | | | total organisms | # boats dirty | # boats w/AIS | # of inspections | % of inspected boats dirty | % of inspected boats w/AIS |
|------------------|-----------------|---------|----------|-----------------|---------------|---------------|------------------|----------------------------|----------------------------|
| | entering | leaving | roadside | | | | | | |
| 4096 | 125 | 138 | -- | 263 | 256 | 10 | 1764 | 14.5% | 0.6% |

Boats dirty = watercraft with any organic material, invasive, non-invasive or unknown.

| Visitor Responses | AIS spread prevention awareness | | | | | | | | | | | # groups asked |
|----------------------------------|---------------------------------|---------|------|-------|------|----|-----|-------|-----------|--------------|------------|----------------|
| | yes | Inspect | Wash | Drain | Bait | LW | Dry | Decon | same lake | first/frozen | didn't ask | |
| # groups | 1067 | 197 | 339 | 100 | 1 | 31 | 488 | 50 | 139 | 91 | 354 | 1318 |
| percentage of total groups asked | 81% | 15% | 26% | 8% | 0.1% | 2% | 37% | 4% | 11% | 7% | NA | |

Yes = showed AIS spread prevention awareness; Drain = drained bilge; Bait = emptied bait bucket/disposed of bait; LW = drained livewell; Dry = dried boat; Decon = visited decon station; Same Lake = boat only goes in this lake; First/Frozen = first launch of the season or frozen boat.

| Organisms Removed | Organism Type | | | | | | | | | total # AIS | % of inspected boats w/AIS |
|--------------------------|---------------|------|------|------|------|------|------|-----|------|-------------|----------------------------|
| | Non-invasive | CLP* | HYD* | EWM* | VLM* | QUA* | SWF* | WC* | ZM* | | |
| # organisms | 252 | 2 | 0 | 6 | 0 | 0 | 0 | 2 | 1 | 11 | 0.6% |
| percentage of total orgs | 96% | 1% | 0% | 2% | 0% | 0% | 0% | 1% | 0.4% | | |

Non-invasive = native aquatic or terrestrial material; CLP = curly-leaf pondweed; HYD = hydrilla; EWM = Eurasian watermilfoil; VLM = variable-leaf milfoil; QUA = quagga mussel; SWF = spiny waterflea; WC = water chestnut; ZM = zebra mussel; */AIS = aquatic invasive species.

| Aquatic Invasive Species Intercepted by Stewards | # found on boats launching | Previous Waterway | # found on boats retrieving | Previous Waterway |
|--|----------------------------|--|-----------------------------|---|
| curly-leaf pondweed | 2 | None (1), Oswego River (1) | 0 | N/A |
| Eurasian watermilfoil | 6 | Hudson River (2), Lake Ontario (1), Long Island Sound (1), Oneida Lake (1), Oswego River (1) | 0 | N/A |
| water chestnut | 1 | Mohawk River (1) | 1 | Sacandaga Lake (1) - previously in Lake Bomoseen VT |
| zebra mussel | 1 | Saratoga Lake (1) | 0 | N/A |
| Totals | 10 | | 1 | |

| Previous Waterways for Launching Boats | # visits |
|--|----------|
| NONE | 503 |
| SAME LAKE - PREVIOUS VISIT | 327 |
| Great Sacandaga Lake | 35 |
| Piseco Lake | 26 |
| Lake Pleasant | 25 |
| NOT ASKED | 19 |
| Indian Lake (Hamilton County) | 12 |
| UNKNOWN (boater doesn't know) | 12 |
| Hudson River | 10 |
| Lake Algonquin (Hamilton County) | 8 |
| Delta Lake | 7 |
| Lake George | 7 |
| Oxbow Lake (Hamilton County) | 7 |
| Kunjamuk River, NY | 5 |
| Canada Lake | 4 |
| Canadarago Lake | 4 |
| Long Island Sound | 4 |
| RENTAL | 4 |
| Seventh Lake | 4 |
| Caroga Lake | 3 |
| Hinckley Reservoir | 3 |
| Lake Placid | 3 |
| Mohawk River | 3 |

| Previous Waterways for Launching Boats | # visits |
|--|----------|
| Old Forge Pond (Hamilton County) | 3 |
| Saratoga Lake | 3 |
| Tupper Lake | 3 |
| Blue Mountain Lake | 2 |
| Fish Creek Ponds | 2 |
| Lake Durant (Hamilton County) | 2 |
| Long Lake | 2 |
| Niagara River, NY | 2 |
| Oneida Lake | 2 |
| Sacandaga River | 2 |
| Skaneateles Lake | 2 |
| unspecified lake in New York | 2 |
| Atlantic Ocean | 1 |
| Big Moose Lake | 1 |
| Bradley Brook Reservoir (Madison County) | 1 |
| Canandaigua Lake | 1 |
| Cassadaga Lakes (Chautauqua County) | 1 |
| Cayuga Lake | 1 |
| Eaton Reservoir (Madison County) | 1 |
| Erie Canal | 1 |
| Fourth Lake | 1 |
| Greenwood Lake (Orange County) | 1 |

| Previous Waterways for Launching Boats | # visits |
|--|-------------|
| Greenwood Lake, West Milford, NJ | 1 |
| Huntington Pond, Redding, CT | 1 |
| Inlet (Franklin County) | 1 |
| Lake Abanakee (Hamilton County) | 1 |
| Lake Lonely (Saratoga County) | 1 |
| Lake Ontario | 1 |
| Lower Saranac Lake | 1 |
| Madawaska Lake, Aroostook County, ME | 1 |
| Mason Lake (Hamilton County) | 1 |
| North Lake (Herkimer County) | 1 |
| Otisco Lake | 1 |
| Pleasant Lake (Fulton County) | 1 |
| Raquette Lake | 1 |
| REFUSED TO ANSWER | 1 |
| Saranac Chain of Lakes (unspecified) | 1 |
| Seneca Lake | 1 |
| Seneca River | 1 |
| Spy Lake (Hamilton County) | 1 |
| St. Lawrence River | 1 |
| Stewarts Bridge Reservoir | 1 |
| Thompsons Lake (Albany County) | 1 |
| Wallum Lake, Worcester County, MA | 1 |
| Total | 1094 |

State of Motorized Boat Registration
(n=1,555)

