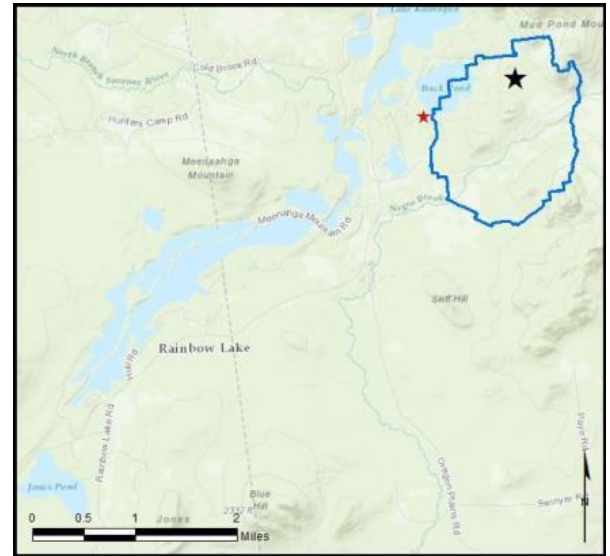


### Rainbow Lake - Buck Pond

**AIS intercepted:** 0  
**Boats inspected:** 1,046  
**Number of visitors:** 1,669  
**Boats failing inspection:** 2.0%

**Dates of operation:** June 4 – September 4  
**Total number of days covered:** 73  
**Weekly coverage:** 5-7 days  
**Visitors showing spread prevention awareness:** 89%  
**Number of previously visited waterways:** 46

**AIS present in waterbody:** none  
**Stewardship history:** 2005 - present  
**Partnership:** Rainbow Lake Association



Watercraft	Boat Type										total # boats observed	total # boats inspected
	Barge	Canoe	Dock	Kayak	Motor	PWC	Row	Sail	SUP	Wind		
# boats observed	0	250	1	466	297	0	13	1	26	0	1054	1046
percentage of total boats	0%	24%	0.1%	44%	28%	0%	1%	0.1%	2%	0%	100%	99%

Boats observed at launch, including those not inspected. PWC=personal watercraft, SUP=stand-up paddleboard, Wind=windsurfer.

total # visitors	organisms found			total organisms	# boats dirty	# boats w/AIS	# of inspections	% of inspected boats dirty	% of inspected boats w/AIS
	entering	leaving	roadside						
1669	10	13	0	23	21	0	1046	2.0%	0%

Boats dirty = watercraft with any organic material, invasive, non-invasive or unknown.

Visitor Responses	AIS spread prevention awareness											# groups asked
	yes	Inspect	Wash	Drain	Bait	LW	Dry	Decon	same lake	first/frozen	didn't ask	
# groups	595	424	143	21	0	6	209	14	61	28	10	669
percentage of total groups asked	89%	63%	21%	3%	0%	1%	31%	2%	9%	4%	NA	

Yes = showed AIS spread prevention awareness; Drain = drained bilge; Bait = emptied bait bucket/disposed of bait; LW = drained livewell; Dry = dried boat; Decon = visited decon station; Same Lake = boat only goes in this lake; First/Frozen = first launch of the season or frozen boat.

Organisms Removed	Organism Type									total # AIS	% of inspected boats w/AIS
	Non-invasive	BN*	CLP*	HYD*	EWM*	VLM*	SWF*	WC*	ZM*		
# organisms	23	0	0	0	0	0	0	0	0	0	0%
percentage of total orgs	100%	0%	0%	0%	0%	0%	0%	0%	0%	0%	

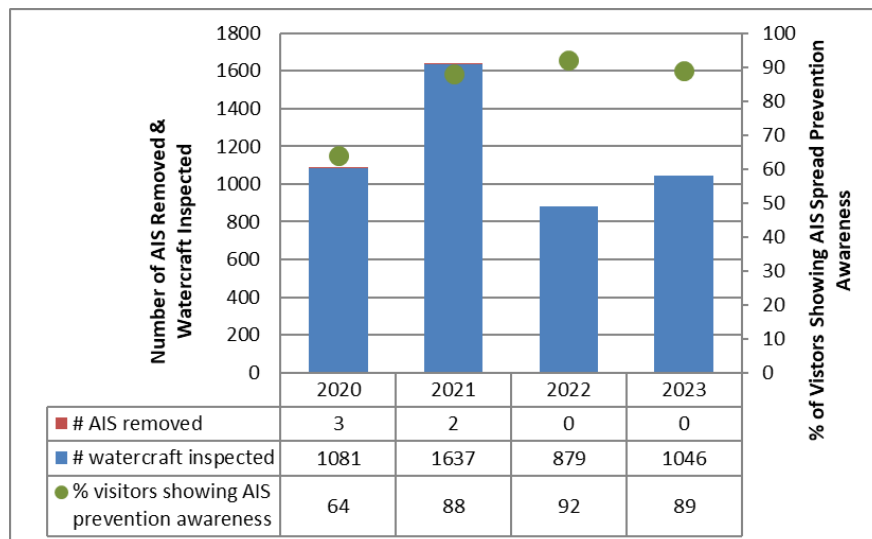
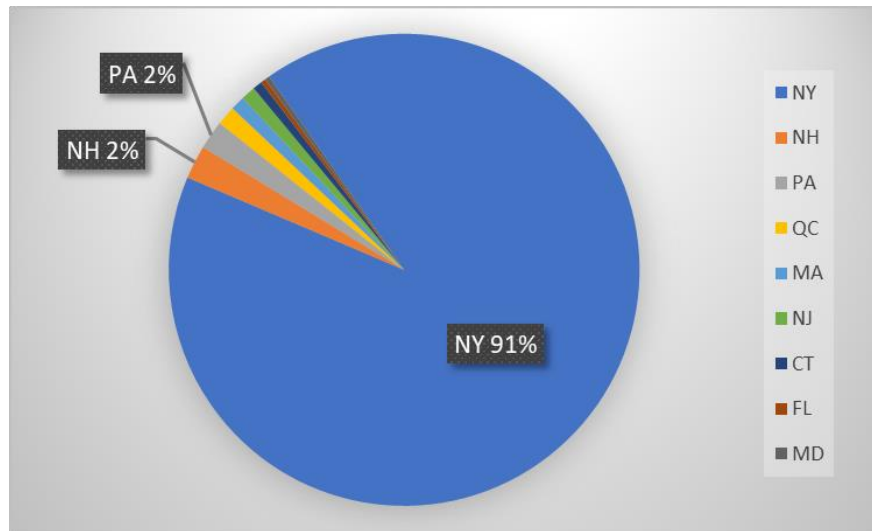
Non-invasive = native aquatic or terrestrial material; BN = brittle naiad; CLP = curly-leaf pondweed; HYD = hydrilla; EWM = Eurasian watermilfoil; VLM = variable-leaf milfoil; SWF = spiny/fishhook waterflea; WC = water chestnut; ZM = zebra mussel; \*/AIS = aquatic invasive species.

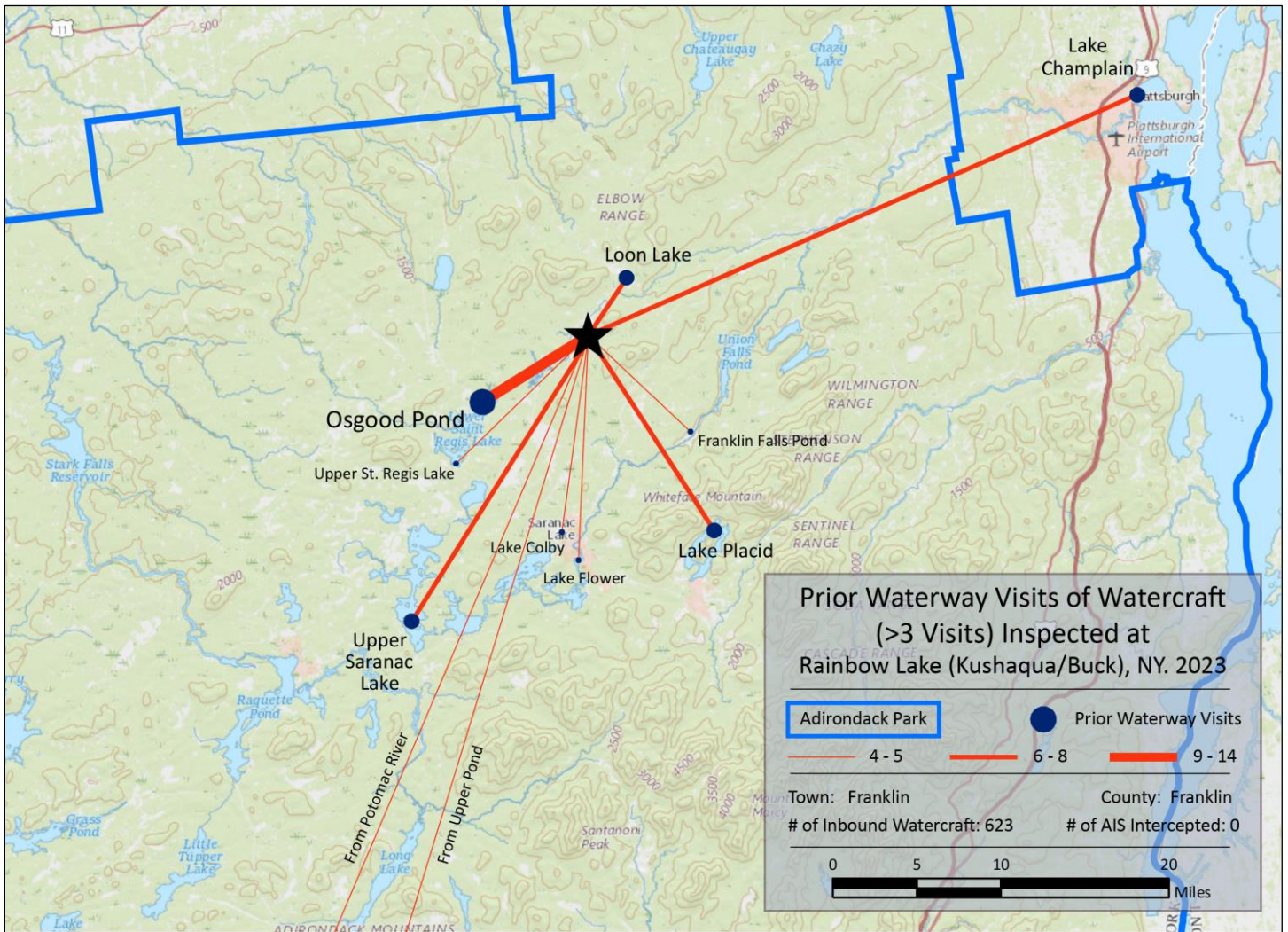
Previous Waterways for Launching Boats	# visits
SAME LAKE - PREVIOUS VISIT	274
NONE	181
RENTAL	23
Osgood Pond	14
Lake Champlain	8
NOT ASKED	7
UNKNOWN (boater doesn't know)	7
Lake Placid	6
Loon Lake (Franklin County)	6
Upper Saranac Lake	6
Franklin Falls Pond (Franklin County)	5
Lake Flower	5
Lake Colby	4
Potomac River	4
Upper Pond (Hamilton County)	4
Upper St. Regis Lake	4
Black Pond (Franklin County)	3
Chazy Lake	3

Previous Waterways for Launching Boats	# visits
Fish Pond (Franklin County)	3
Lower Saranac Lake	3
Moose Pond Campground (Essex County)	3
Second Pond	3
Black Moshannon Lake, Rush Township, PA	2
Chittenden Reservoir, Chittenden, VT	2
Cranberry Lake	2
Floodwood Pond	2
Hudson River	2
Jones Pond (Franklin County)	2
Kiawassa Lake	2
Long Lake	2
Long Lake Public Access, Albion, IN	2
Mohawk River	2
North Lake (Herkimer County)	2
Polliwog Pond (Franklin County)	2
Putnam Pond (Essex County)	2
Rollins Pond	2

Previous Waterways for Launching Boats	# visits
UnspecifiedPrivateOwned	2
Adirondacks (unspecified)	1
Chapman Pond, East Haddam, CT	1
Connecticut River	1
Fish Creek Ponds	1
Great Sacandaga Lake	1
Lake Gleneida (Putnam County)	1
Lake Sunapee, Sunapee, NH	1
LaPlatte River, VT	1
Long Pond St. Regis Canoe Area (Franklin)	1
Lower St. Regis Lake	1
McRorie Lake (Hamilton County)	1
Moose Pond (Hamilton County)	1
Norwood Lake (St Lawrence County)	1
Ottawa River	1
REFUSED TO ANSWER	1
Seventh Lake	1
Tupper Lake	1
<b>Total</b>	<b>623</b>

State of Motorized Boat Registration  
(n=304)





Buck Pond Boat Launch