

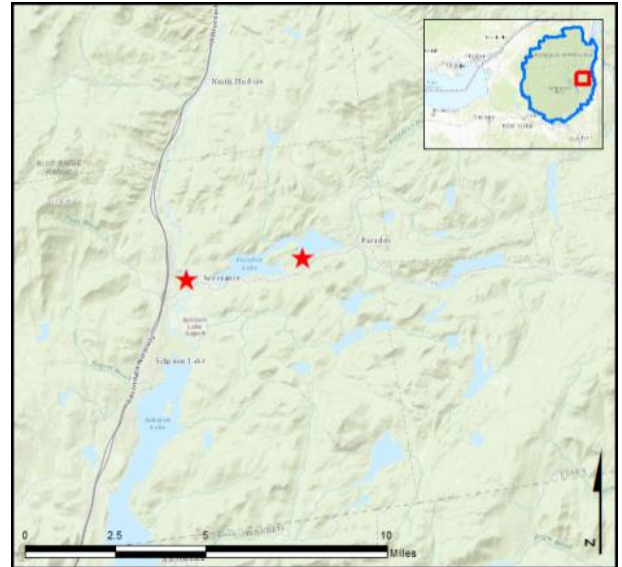
AWI Partner Program Reports

Schroon Region – Paradox Lake & Severance Decon Station

AIS intercepted: 6
Boats inspected: 912
Number of visitors: 1,537
Boats failing inspection: 1.3%

Dates of operation: May 29 – October 11
Weekly coverage: 5 days (Paradox) 7 days (Severance)
Visitors showing spread prevention awareness: 29%
Number of previously visited waterways: 52

AIS present in waterbody: curly-leaf pondweed,
 Eurasian watermilfoil, variable-leaf milfoil
Partnerships: Paradox Lake Association, NYSDEC Paradox Lake
 Campground
Notes: AWI provided support through WISPA data management.



Watercraft	Boat Type										total # boats observed	total # boats inspected
	Barge	Canoe	Dock	Kayak	Motor	PWC	Row	Sail	SUP	Wind		
Paradox Lake	0	70	2	391	344	33	1	3	14	0	858	785
percentage of total boats	0%	8%	0.2%	46%	40%	4%	0.1%	0.3%	2%	0%	100%	91%
Severance Decon	0	8	0	12	86	16	0	1	4	0	127	127
percentage of total boats	0%	6%	0%	9%	68%	13%	0%	1%	3%	0%	100%	100%
total	0	78	2	403	430	49	1	4	18	0	985	912
percentage of total boats	0%	8%	0.2%	41%	44%	5%	0.1%	0.4%	2%	0%	100%	93%

Boats observed at launch, including those not inspected. PWC=personal watercraft, SUP=stand-up paddleboard, Wind=windsurfer.

	total # visitors	organisms found			total organisms	# boats dirty	# boats w/AIS	# of inspections	% of inspected boats dirty	% of inspected boats w/AIS
		entering	leaving	roadside						
Paradox Lake	1342	6	6	--	12	10	5	785	1.3%	0.6%
Severance Decon	195	--	--	3	3	2	1	127	1.6%	0.8%
total	1537	6	6	3	15	12	6	912	1.3%	0.7%

Boats dirty = watercraft with any organic material, invasive, non-invasive or unknown.

Visitor Responses	AIS spread prevention awareness											# groups asked
	yes	Inspect	Wash	Drain	Bait	LW	Dry	Decon	same lake	first/frozen	didn't ask	
Paradox Lake	98	5	73	5	0	0	19	17	0	3	47	615
percentage of total groups asked	16%	1%	12%	1%	0%	0%	3%	3%	0%	0.5%	NA	
Severance Decon	110	26	11	19	1	5	16	110	0	0	0	110
percentage of total groups asked	100%	24%	10%	17%	1%	5%	15%	100%	0%	0%	NA	
total	208	31	84	24	1	5	35	127	0	3	47	725
percentage of total groups asked	29%	4%	12%	3%	0.1%	1%	5%	18%	0%	0.4%	NA	

Yes = showed AIS spread prevention awareness; Drain = drained bilge; Bait = emptied bait bucket/disposed of bait; LW = drained livewell; Dry = dried boat; Decon = visited decon station; Same Lake = boat only goes in this lake; First/Frozen = first launch of the season or frozen boat.

Organisms Removed	Organism Type									total # AIS	% of inspected boats w/AIS
	Non-invasive	CLP*	HYD*	EWM*	VLM*	QUA*	SWF*	WC*	ZM*		
Paradox Lake	7	1	0	3	1	0	0	0	0	5	0.6%
percentage of total orgs	58%	8%	0%	25%	8%	0%	0%	0%	0%		
Severance Decon	2	0	0	0	0	0	1	0	0	1	0.8%
percentage of total orgs	67%	0%	0%	0%	0%	0%	33%	0%	0%		
total	9	1	0	3	1	0	1	0	0	6	0.7%
percentage of total orgs	60%	7%	0%	20%	7%	0%	7%	0%	0%		

Non-invasive = native aquatic or terrestrial material; CLP = curly-leaf pondweed; HYD = hydrilla; EWM = Eurasian watermilfoil; VLM = variable-leaf milfoil; QUA = quagga mussel; SWF = spiny waterflea; WC= water chestnut; ZM = zebra mussel; */AIS = aquatic invasive species.

Paradox Lake

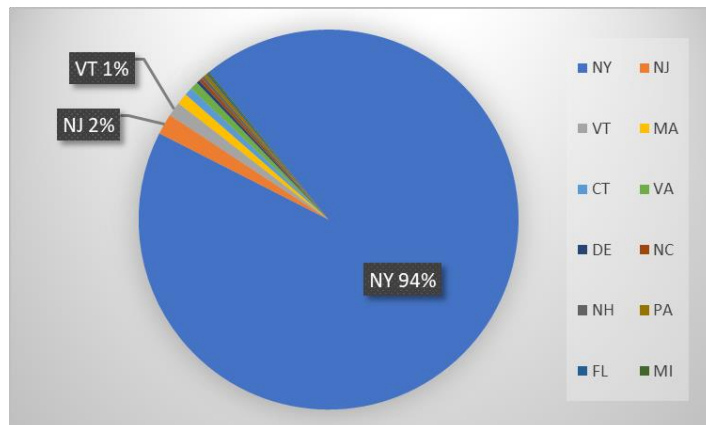
Aquatic Invasive Species Intercepted by Stewards	# found on boats launching	Previous Waterway	# found on boats retrieving	Previous Waterway
curly-leaf pondweed	1	Schroon Lake (1)	0	N/A
Eurasian watermilfoil	0	N/A	3	Paradox Lake (1)
variable-leaf milfoil	1	Long Pond Essex County (1)	0	N/A
Totals	2		3	

Severance Decon

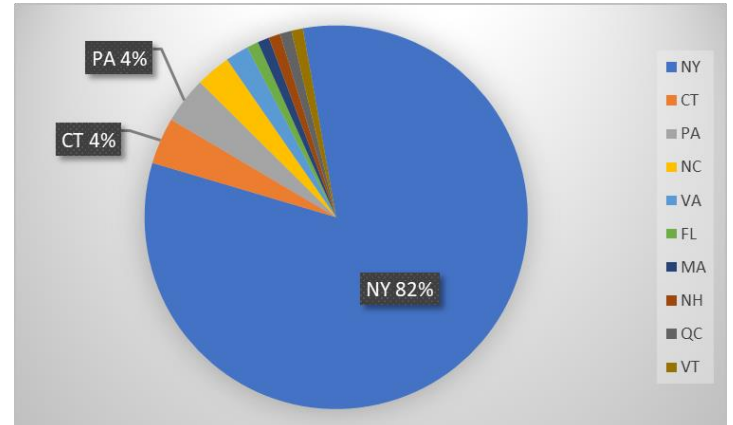
Aquatic Invasive Species Intercepted by Stewards	# found at roadside	Previous Waterway
spiny/fishhook waterflea	1	Lake Champlain (1)
Totals	1	

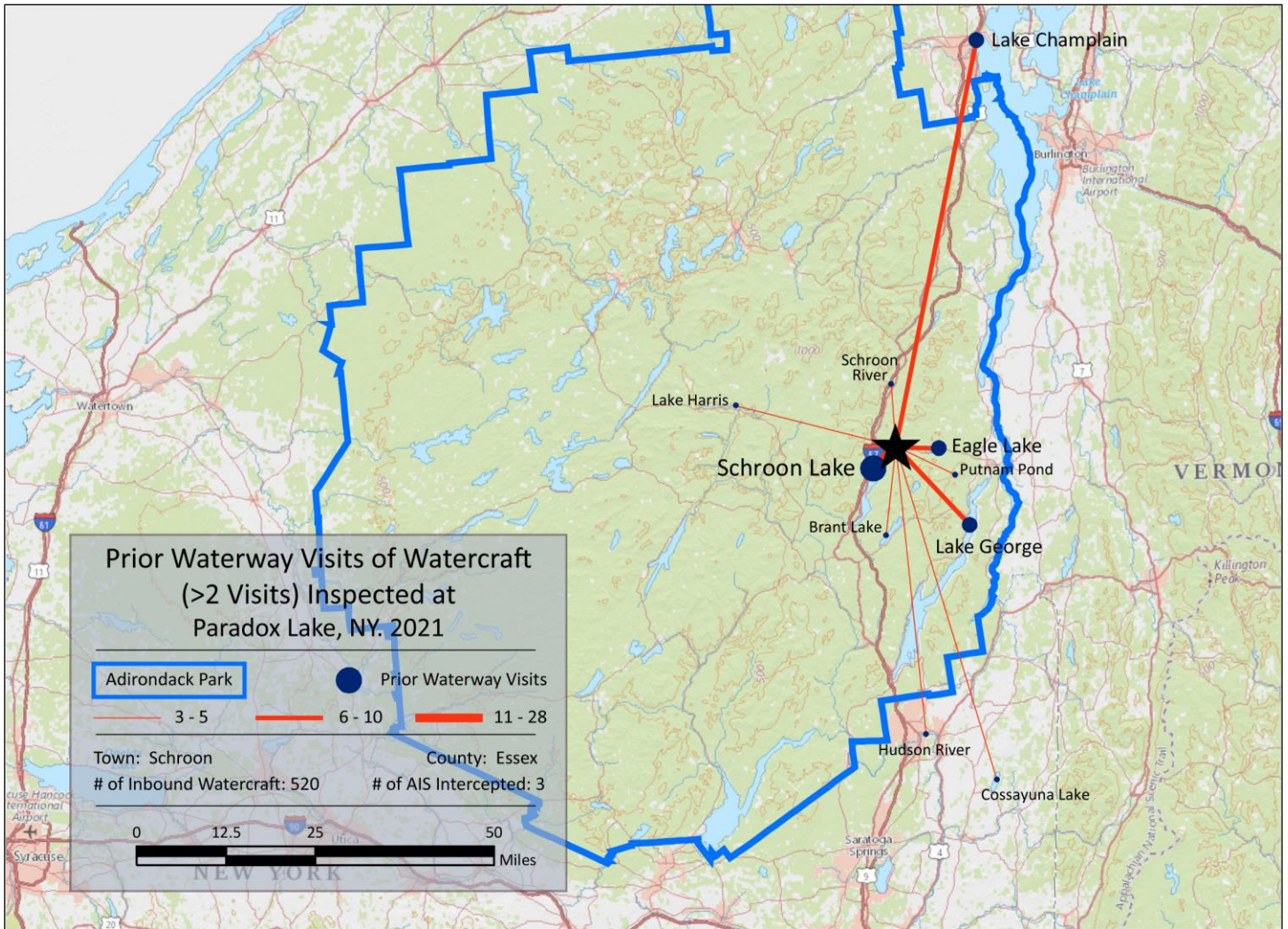
State of Motorized Boat Registration

Paradox Lake (n=735)



Severance Decon (n=102)



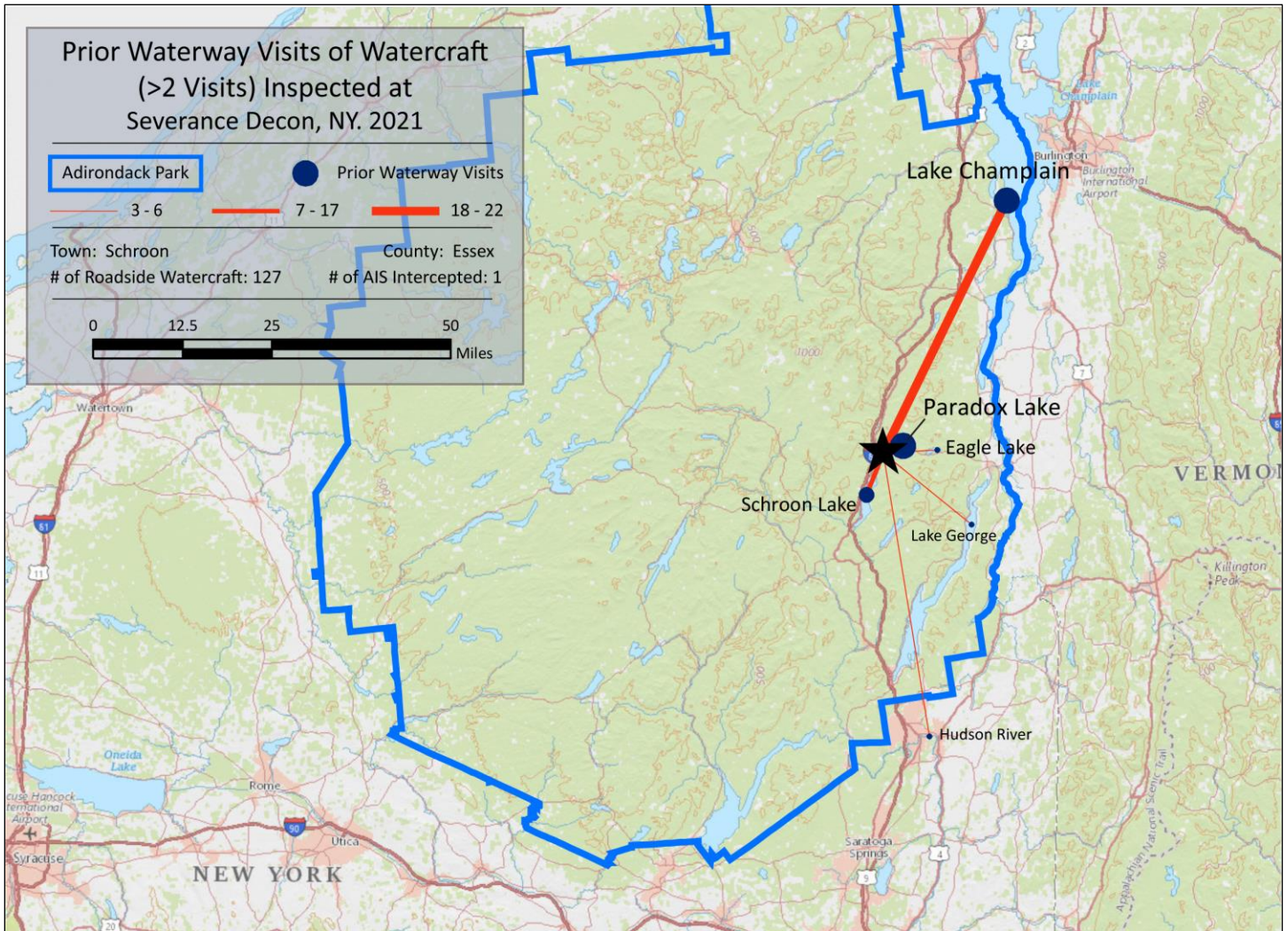


Paradox Lake

Previous Waterways for Launching Boats	# visits
NONE	263
SAME LAKE - PREVIOUS VISIT	133
Schroon Lake	28
Lake Champlain	8
Eagle Lake (Essex County)	7
NOT ASKED	7
Lake George	6
Harris Lake (Essex County)	5
REFUSED TO ANSWER	5
Schroon River, NY	5
Brant Lake	4
RENTAL	4
Cossayuna Lake (Washington County)	3
Hudson River	3

Previous Waterways for Launching Boats	# visits
Putnam Pond (Essex County)	3
UNKNOWN (boater doesn't know)	3
Cedar River Flow (Hamilton County)	2
Flemings Pond (Essex County)	2
Lake Luzerne (Warren County)	2
Lake Ontario	2
Lake Ronkonkoma (Suffolk County)	2
Rollins Pond	2
Saratoga Lake	2
unspecified lake in New York	2
Upper Saranac Lake	2
Buck Pond (Rainbow Lake/Lake Kushaqua)	1
Cranberry Lake	1

Previous Waterways for Launching Boats	# visits
Crane Pond (Essex County)	1
Great Sacandaga Lake	1
Hadlock Pond (Washington County)	1
Indian Lake (Hamilton County)	1
Lake Dunmore, Salisbury, VT	1
Lake Flower	1
Long Lake	1
Long Pond (Essex County)	1
Long Pond St. Regis Canoe Area (Franklin)	1
Mohawk River	1
Rich Lake (Essex County)	1
Skaneateles Lake	1
Tupper Lake	1
Total	520



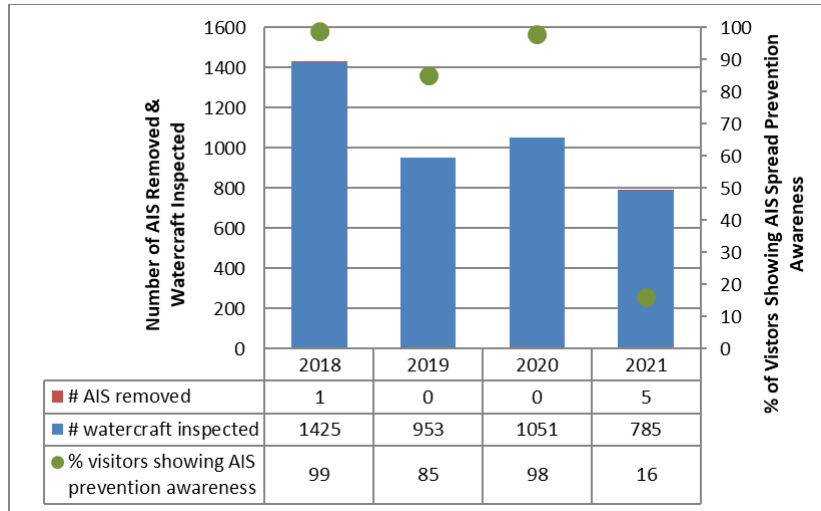
Severance Decon

Previous Waterways for Launching Boats	# visits
Lake Champlain	22
NONE	20
Paradox Lake	18
Schroon Lake	14
Hudson River	6
Lake George	6
Eagle Lake (Essex County)	5
Brant Lake	2
Greenwood Lake (Orange County)	2
Lake Marburg, PA	2
Little Tupper Lake	2

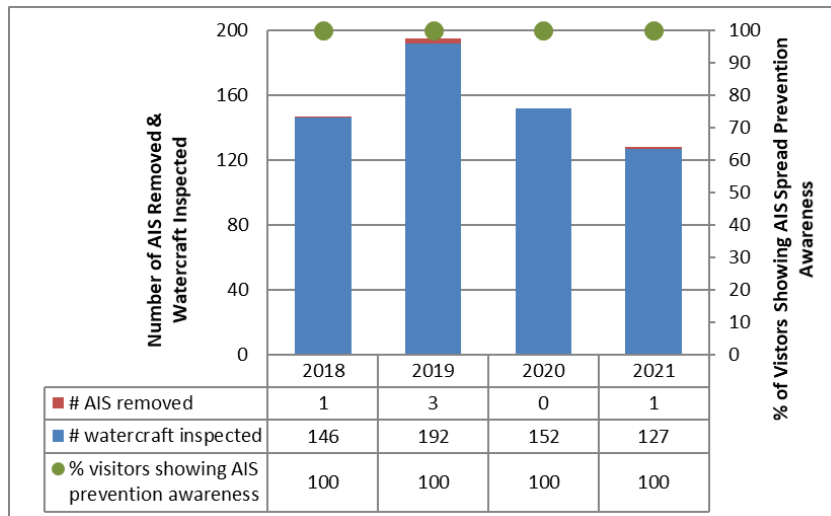
Previous Waterways for Launching Boats	# visits
Loon Lake (Warren County)	2
Moose Pond Minerva (Essex County)	2
Putnam Pond (Essex County)	2
Raquette Lake	2
Saranac Chain of Lakes (unspecified)	2
Upper St. Regis Lake	2
Black Lake (Seneca County)	1
Eaton Reservoir (Madison County)	1
Forest Lake, Winchester, NH	1
Franklin Pierce Lake, NH	1
Glen Lake (Warren County)	1

Previous Waterways for Launching Boats	# visits
Great Sacandaga Lake	1
Irondequoit Bay (Monroe County)	1
Lake Adirondack (Hamilton County)	1
Lake Luzerne (Warren County)	1
Lower Saranac Lake	1
Mohawk River	1
Oneida Lake	1
Putnam Lake (Putnam County)	1
Round Pond (Hamilton County)	1
Saratoga Lake	1
Schroon River, NY	1
Total	127

Paradox Lake



Severance Decon



Paradox Lake Boat Launch