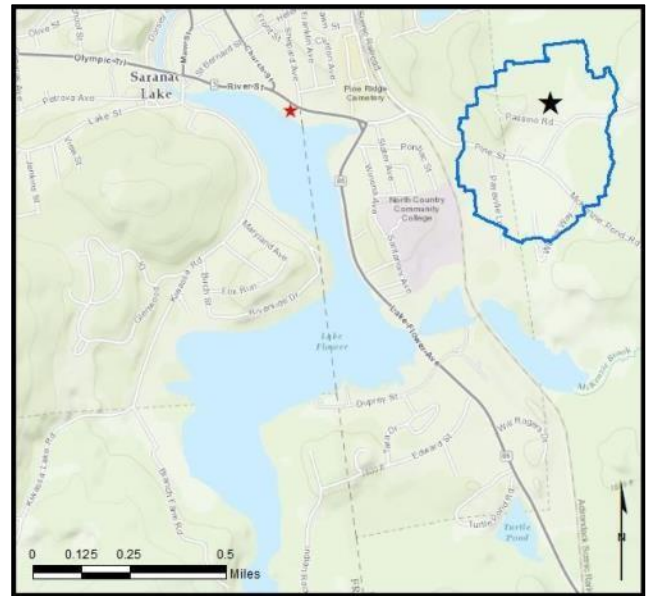


Lake Flower

AIS intercepted: 13
Boats inspected: 1,256
Number of visitors: 2,595
Boats failing inspection: 2.3%

Dates of operation: June 3 – October 9
Total number of days covered: 95
Weekly coverage: 5-7 days
Visitors showing spread prevention awareness: 96%
Number of previously visited waterways: 37

AIS present in waterbody: curly-leaf pondweed, Eurasian watermilfoil, variable-leaf milfoil
Stewardship history: 2011 - present



Watercraft	Boat Type										total # boats observed	total # boats inspected
	Barge	Canoe	Dock	Kayak	Motor	PWC	Row	Sail	SUP	Wind		
# boats observed	0	111	0	102	993	71	0	1	11	0	1289	1256
percentage of total boats	0%	9%	0%	8%	77%	6%	0%	0.1%	1%	0%	100%	97%

Boats observed at launch, including those not inspected. PWC=personal watercraft, SUP=stand-up paddleboard, Wind=windsurfer.

total # visitors	organisms found			total organisms	# boats dirty	# boats w/AIS	# of inspections	% of inspected boats dirty	% of inspected boats w/AIS
	entering	leaving	roadside						
2595	7	28	0	35	29	13	1256	2.3%	1.0%

Boats dirty = watercraft with any organic material, invasive, non-invasive or unknown.

Visitor Responses	AIS spread prevention awareness											# groups asked
	yes	Inspect	Wash	Drain	Bait	LW	Dry	Decon	same lake	first/frozen	didn't ask	
# groups	1092	311	507	337	1	23	480	14	57	28	40	1134
percentage of total groups asked	96%	27%	45%	30%	0.1%	2%	42%	1%	5%	2%	NA	

Yes = showed AIS spread prevention awareness; Drain = drained bilge; Bait = emptied bait bucket/disposed of bait; LW = drained livewell; Dry = dried boat; Decon = visited decon station; Same Lake = boat only goes in this lake; First/Frozen = first launch of the season or frozen boat.

Organisms Removed	Organism Type										total # AIS	% of inspected boats w/AIS
	Non-invasive	BN*	CLP*	HYD*	EWM*	VLM*	SWF*	WC*	ZM*			
# organisms	22	0	0	0	0	13	0	0	0	13	1.0%	
percentage of total orgs	63%	0%	0%	0%	0%	37%	0%	0%	0%			

Non-invasive = native aquatic or terrestrial material; BN = brittle naiad; CLP = curly-leaf pondweed; HYD = hydrilla; EWM = Eurasian watermilfoil; VLM = variable-leaf milfoil; SWF = spiny/fishhook waterflea; WC = water chestnut; ZM = zebra mussel; */AIS = aquatic invasive species.

Aquatic Invasive Species Intercepted by Stewards	# found on boats launching	Previous Waterway	# found on boats retrieving	Previous Waterway
variable-leaf milfoil	1	Lake Flower (1)	12	Lake Flower (12)
Totals	1		12	

Previous Waterways for Launching Boats	# visits
NONE	370
SAME LAKE - PREVIOUS VISIT	236
RENTAL	29
NOT ASKED	25
Lake Placid	24
Lower Saranac Lake	17
Upper Saranac Lake	12
Second Pond	10
Lake Champlain	8
Buck Pond (Rainbow Lake/Lake Kushaqua)	7
Lake Colby	7
Chateaugay Lake	5
Mirror Lake	5
Tupper Lake	5
Fourth Lake	4

Previous Waterways for Launching Boats	# visits
Lower St. Regis Lake	4
Meacham Lake	4
Upper St. Regis Lake	4
Cranberry Lake	3
Lake George	3
Long Lake	3
Moose Pond (Hamilton County)	3
REFUSED TO ANSWER	3
UNKNOWN (boater doesn't know)	3
Chapel Pond (Essex County)	2
Erie Canal	2
Follensby Clear Pond	2
Franklin Falls Pond (Franklin County)	2
Lake Clear	2
Loon Lake (Franklin County)	2

Previous Waterways for Launching Boats	# visits
Saranac River	2
Schroon Lake	2
Canandaigua Lake	1
Chazy Lake	1
Delaware River	1
Fulton Chain of Lakes (unspecified)	1
Iona Lake, Franklin, NJ	1
Lake Erie	1
Lincoln Pond (Essex County)	1
Manasquan River, NJ	1
Mountain View Lake (Franklin County)	1
Raquette River, NY	1
Saranac Chain of Lakes (unspecified)	1
Schroon River, NY	1
South Pond, Marlboro, VT	1
Total	823

State of Motorized Boat Registration
(n=1,040)

